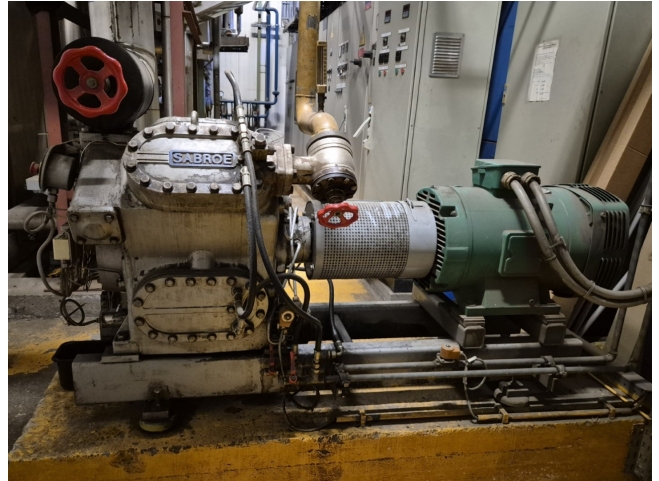


# Sabroe SMC 104 L HP

## Specifications

Brand	Sabroe
Type	SMC 104 L HP
Refrigerant	NH 3 (ammonia)
kW at +10°C/+40°C	361,2
kW at 0°C/+40°C	238,9
kW at -5°C/+40°C	190,1
kW at -10°C/+40°C	148,6
Electromotor Specs	50/60 Hz - 55/63 kW - 1455/1755 RPM
Unloaded Start	✓
Capacity Control	✓
On steel base frame	✓
Pressure safety switches	✓
Hp/Lp/Op	
Pressure gauges	✓
Hp/Lp/Op	
Sight Glass	✓
m <sup>3</sup> / h	276
Stock	1



## Description

### Used Sabroe SMC 104 L HP

Used Sabroe SMC 104 L HP reciprocating compressor on NH<sub>3</sub>. Complete with a Leroy Somer PLS225MR-T electric motor - 50/60 Hz - 55/63 kW - 1455/1755 RPM, pressure and safety switches/gauges. The compressor has a displacement of 276 m<sup>3</sup>/h.

\*Why choose for HOSBV? Were not only the largest used refrigeration specialist in Europe, but also, we deliver all equipment including an extensive test, warranty and industrial cleaning.

\*Optional we can also perform a new paint job and arrange the logistics.

